



Mountain Laurel Quilt Guild

February 2022

The Senior Center class room upstairs is closed due to scabies and we will not be meeting there. Watch for further details.

Officers & Committee Members

President

Chris Zimmer
crzimmercsn@gmail.com

Vice President

Brenda Murry
Mofish60@gmail.com

Secretary

Secretary

Sue Stell
Stell.susan@gmail.com

Treasurer

LeeAnn Williams
Leeannwilliams7@yahoo.com

Newsletter

Patricia Gustafson
Pgustafson36@gmail.com

Friendship

Sue Corcoran
scorc228@gmail.com

Workshops

Sue Sweet
sssweet@bellsouth.net

Presidents Greeting for February:

Greetings Hibernators !!!!!

I hope this email finds you well and enjoying your chosen passion of quilting. I just finished a 21 day declutter video series on YouTube with Karen Brown of Just Get It Done Quilts. She had some great tips and tricks to get your sewing space decluttered, functional and positive energy flowing.

If you did a declutter please remember to bring three of your items for the swap table at this months meeting on February 1. Anything you bring that is not taken you need to pick up and take home. If its a book or magazine there is a donation table downstairs in the Senior Center by the bathroom that you can place it on for another member of the community to pick up.

If anyone is interested in learning how to use our Accuquilt please let Sue Sweet know and we can incorporate it into a workshop day. Any member can use our cutter and dies in the craft room but they cannot be removed from the premise. You can ask Karen/Billie at the desk to unlock the cabinet. Also Betty Minick and several other ladies who used to do a sit and sew at The Quilt shop now do it in the craft room on Wednesdays. See Betty for details and requirements. See you all Tuesday - as long as the weather is good and the Watauga Schools are open.

SHOP NEWS

High Country Quilts

Lots of boxes coming in the front door of the shop the last couple of weeks – new Art Gallery, ALL OF THE BACKORDERED MODA, lovely new white on whites and themed prints from Maywood, fat quarter bundles from Riley Blake and more. Our next new Stuff Saturday is February 26th, weather permitting.

A visit from Jim Cantore never bodes well and our snow cycle seems to target the weekend this year. As a result – the shop's class and event schedule has required major overhaul. Be sure and check the web site (www.highcountryquilts.com) workshop calendar for new dates, there are still a couple of openings in each of the classes. Upcoming classes include: a quilt made with toweling, basic machine maintenance and repair (requested to run again), by Annie's basic techniques, and Quilt-as-you-go fundamentals.

And thanks to all for the prayers and good wishes on the much awaited shoulder rebuild. Two weeks out of surgery, I have passed out of the week 8 physical therapy goals, the new goal being not to screw it up before it is totally healed.

Mountain Thread Company

We are open our normal hours this winter season.
Open daily : Monday thru Saturday
10:00 - 5:00

Mountain Laurel Quilt Guild

Sew Original:

New fabric is coming in. Be sure to come by and check it out.

We are working on classes for February, March and beyond. Here are some that might interest you :

- Tuesdays 4:30pm - 7:30pm or 2nd/ 4th
Thursday 10am - 1pm) Beginning Quilting
(with Becky)
- January 29th Free Motion Sampler class
Patty
- February 11th FREE Motion Mastery in a
Month Session 1
- February 12th Accidental Landscape
- February 16th Ruler work with Template
Bags
- February 26th GRIDWORK
- February 28th New Accessory Mastery for
Bernina
- March 10th Thread Painting Portrait
- March 11th Quilt Club begins for 2022
- March 11th Martelli Event
- March 12th Quilted Hug
- March 19th Q series Accessories

We so appreciate all the participation in our Monthly Quilt challenge. We have incorporated the feedback given by you into the challenge criteria for 2022. Here is the plan for 2022:

Our challenge is to take a focus each month and display customer quilts on our gallery walls. Here is how it works:

- Each month will have a theme or focus.
- Your quilt will need to have the predominant color of that month's color (don't worry you can use other colors too) or the

Mountain Laurel Quilt Guild

month will be any color but include a specific technique

- It could be a quilt you have done recently which has not been in a quilt show or newly completed. (let's not repeat the quilts from 2021 challenge please.
- Customers will vote on their favorite quilt (voting all month long!).
- The winner (quilt that receives the most votes) will receive a gift certificate of \$50

So Here is THIS Year's Focus Line-up

January Silver/ White/ Blues...a wintry focus

February – Anything Hearts...any color

March – Panels Any color!!

April – Pastel colors

May – Florals

June – Applique or beach theme

July - Patriotic

August – Paper pieced any color any size

September – Fall colors

October – Halloween (this month you can include small items that are not necessarily quilts but are theme related...plus quilts are appreciated too!)

November – Gray with any other color(s)

December – Christmas color or theme! Let's decorate the store with your handmade Christmas items i.e. pillows, stockings, runners, etc.

Bring your quilt to the store the 1st week of the month for display. When you bring it in, we'll ask a few questions about your quilt: when it was made; pattern name ; who quilted it ;is there story behind the quilt? Receive a 20% off coupon for each month you participate

Mountain Laurel Quilt Guild
January 4, 2022, Minutes

We met as a very small group due to some roads still covered in snow and ice.

There were no minutes from December luncheon. The Treasurer's report was \$5556.62 with no transactions this month.

Membership is now 50. The Board is looking for any suggestions how to encourage membership.

We had 2 Facebook pages. One has been taken down. If you find you cannot use our Facebook page and want to, look for the Facebook page with the mountains logo (not the mountain laurel flower) and ask to be added.

Show and Share

Pat Miller made pillowcases for her twin granddaughters. 2 are cotton with patterned borders. 2 are fleece with minky border and their names embroidered.

Patty Blanton showed her blue and silver quilt to remind us the color contest at Sew Original this month is blue and white and silver. Then she showed examples of her work with rulers. One was a beautiful Christmas tree with crystal embellishments. This was a Westalee design. You can find patterns on their website. Patty will do a rulers class Friday. 1/7.

Sue Corcoran showed a donation quilt in reds and yellows.

Georgie McKenzie sent donation quilts: various colored jars. She used lace on the sashing of this one. Another was a square in a square done in bright colors. Also a deer in the forest print set on point.

Mountain Laurel Quilt Guild

Chris had a top that needs quilting and Pat Miller took it. Also a top partly put together featuring hearts. Sue Corcoran took it to finish.

Patty described a temperature quilt. There was discussion of ways it can be done and whether it would fun to do.

Program

Accidental Landscapes by Sue Corcoran and Patty Blanton.

Sue and Patty showed examples and techniques. These are made without a pattern but fabric colors are chosen to coordinate. By cutting a wavy or zigzag line on a strips of fabric and placing these on a foundation create a landscape design. They use a picture matting or cut one from poster board. Cut it apart at diagonal corners. You can move and hold the 2 pieces of the frame to show what you will get from different parts of your landscape. You can add features such as barns, trees. You can add borders or stretch it on art board. You can also use ink tense pencils or water soluble crayons to add shading or other colors. They advised us not to shop for landscape fabric but look for the right colors. They each showed some beautiful examples of their work. There are many books and videos on the internet. Our workshop on January 18 will be more on the technique.

Respectfully submitted, Sue Stell, Secretary

Mountain Laurel Quilt Guild

Birthdays.

Feb 2 Betty Minick
9 Sheri Elderfield
13 Selina Anderson
28 Sue Corcoran

Treasurer's Report.

Donation News

We continue to collect all sizes of quilts for various sites around Watauga and Avery County. We recently got a request for baby/toddler quilts from Janet Milsap at RAM in Newland. Her "Time for a Change" program aimed at new mother's and babies with diapers, formula and this time of year blankets or quilts if available. So if you have a top and backing we have batting or fleece. We also have some long armers who have offered to quilt them for you as their part of the donation quilts. Just let us know.

Donation Committee

Chris Zimmer Alice Johnson Diane Goff

Mountain Laurel Quilt Guild

Donation Quilt Updates:

Members have asked about our donations over the past year.

Heart Pit Pillows to Cancer Center and Dr. Beaver's office 20.

Back Packs to foster Children Agency - 15

DSS Quilts - 10

Red Cross - 14

Sewing Seeds and Red Cross - girls dresses and boys shorts 100

Watauga Cancer Center - 8

Children's Advocacy Center - 45

Toe River Healthy Families - 25

Placemats to home meals and Senior luncheons - 195

Feeding Avery Families placemats - 47

Membership

We now have 51 members.

Welcome: Dominique (Nicky) Lowitz
Adrienne

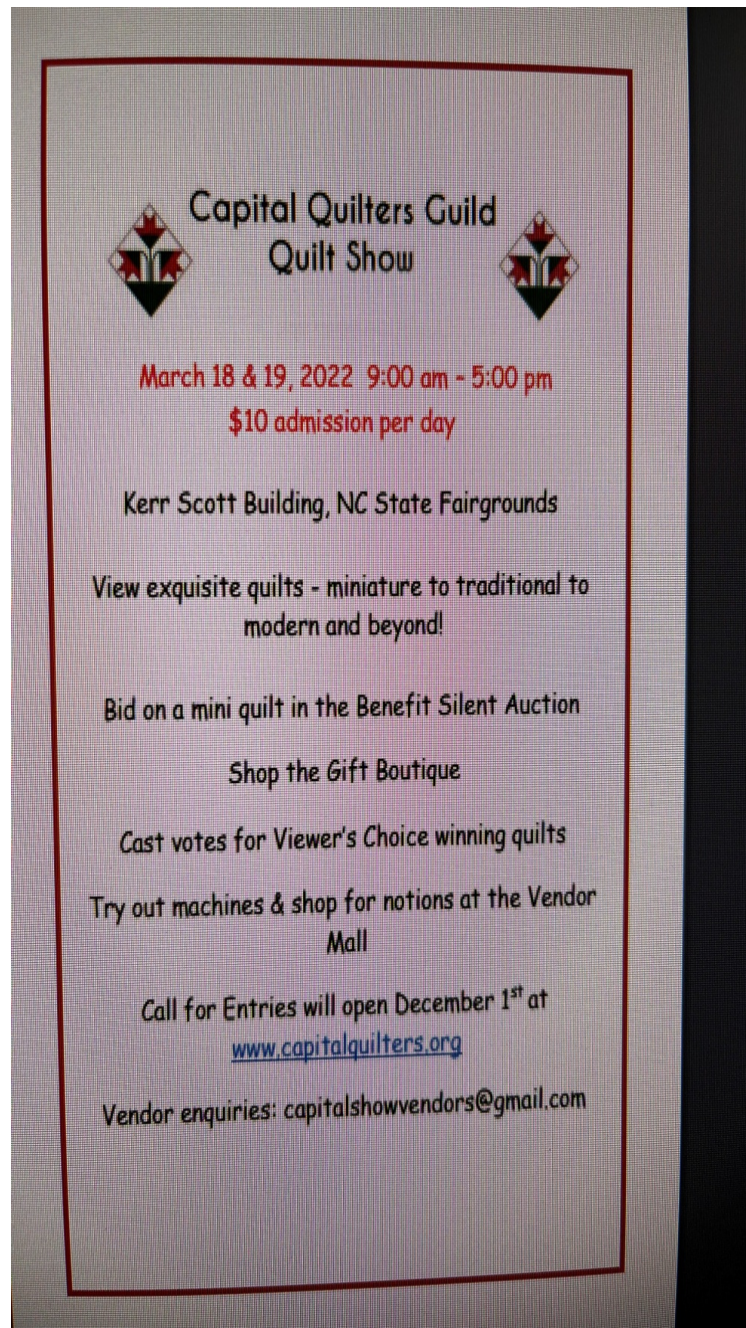
Let's meet our newest member: Nicky Lowitz

I moved full time to Boone from Sonora, in Northern California, in August of 2021 with my 2 Australian Shepherds and my 2 cats.

I first taught myself to make quilts in the mid 70's. I started with full sized, hand pieced, embroidered crazy quilts. I lived in Colorado at the time so I made them thick and warm. I started again in 2009 shortly before I retired. I make pieced quilts, paper pieced quilts, hand embroidered crazy quilts and more recently some modern quilts. I do my own quilting in free motion on my Janome Horizon 7700.

I look forward to meeting you all.

Mountain Laurel Quilt Guild



Upcoming Events

Sewing Journal Workshop

Ladies,

Need a sewing kit you can grab and go, an ER kit for the office, a personalized Mother's Day, housewarming or hostess gift? Let the February Workshop provide some inspiration. We'll be constructing a fabric "journal" with pockets and plackets to keep your needles, pins, small WIPs, tweezers, etc together. Journals can be tailored to the purpose and individual. We'll have some examples at the February meeting. See Sue Sweet's article on the February Workshop for a list of materials.

Our February workshop will be on Tuesday, Feb. 15th from 10 - 3:00 at the Senior Center. We will be working on "Sewing Journals" made from fabric. Diane Goff and Sandy Hicks will be leading us in this project. There is no cost for the workshop. This should be a great workshop to bring out your creativity. Please join us and have fun sewing together.

If you have any questions, call Susan Sweet at 828 263 8399.

Mountain Laurel Quilt Guild

MATERIALS:

Felt - 4" X 5" piece, decorative edge optional

Lightweight fusible interfacing

2 scraps 7" X 10" piece (for pages)

1 scrap 8" X 11" piece (for the cover)

From coordinating fabrics

2 9" X 12" pieces (for the cover)

4 8" X 11" pieces (for the pages)

1 6" X 12" piece (for the inside cover pocket)

4 11" X 5" pieces (for the pages' pockets)

Also needed:

Thin Elastic 3.5"- 4" exact measurement will depend on button size and placement.

Button for closure.

Optional: elastic, ribbon, extra pockets, extra felt, decorative lace, appliques, buttons, etc.

Suggestions for fillers: needles, pins, buttons, threads

xxxxxxxxxxxxxxxxxxxxxxxx

March- Bunny Bingo program and workshop

This was supposed to be done in 2020!

But Covid happened. Sue Sweet will do both program and workshop. You may already have your bingo card made.

Attention:

Watauga County has gone into Emergency Status and for us Mountain Laurel Quilt Guild that means masks will be required for entrance and attendance at meetings and workshops. This mandate will remain in effect until the Senior Center requirements change.

I am so sorry for the inconvenience it has caused in the past for some members.

Suggested measurements for Donation Quilts

Baby quilts are 40 x 40

Child Quilts 42 x 48 and these will go to the Children's Advocacy Center, Healthy Children in Avery, special child requests, foster program. And others as asked.

Teen/Adult lap throw 54 x 60 - Cancer Center, Red Cross through Sue Sweet, Advocacy Center, Foster Care programs and other areas when asked.

Please mark these suggested sizes down. I have some fleece, lots of batting and we have fabric for making an after quilt backing. Please let me know which you prefer to work with.

Thank you for all you do.

Mountain Laurel Quilt Guild

Landscapes from Sue Corcoran

